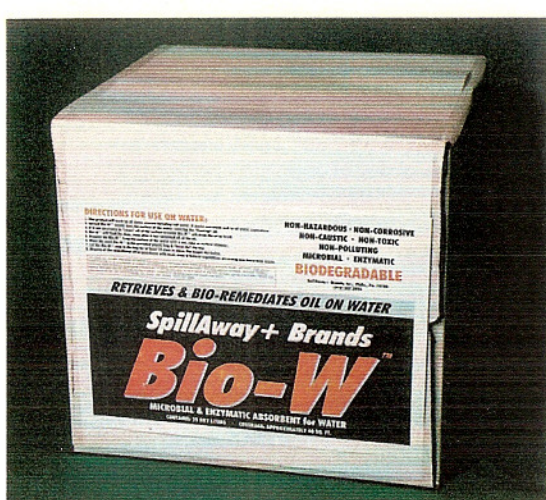


SpillAway+™ Brands

Bio-W™

BIO-REMEDIAL • ENZYMATIC

Floating Absorbent



PRODUCT OVERVIEW

SpillAway+™ Brands developed *Bio-W™* to solve one of the most difficult contamination problems facing industry. *Bio-W™* is the first bio-remedial, floating absorbent designed to absorb and control most hydrocarbons floating on water. This product has the ability to repel water therefore allowing it to "hold" only the hydrocarbon it absorbs. When the hydrocarbons are "locked" into the fibers of *Bio-W™* the microbes will begin to bio-remediate the contaminant turning the hydrocarbon into harmless carbon dioxide (CO₂) and water. *Bio-W™* will float even when fully saturated with the hydrocarbon. It will not leach or drain during the bio-remedial process. This product is a natural, non-hazardous, non-polluting product that is manufactured through a patented process to solve contamination problems on water & reduce the cost of disposal of these contaminants.

HOW TO USE THIS PRODUCT

Bio-W™ will work well on both fresh and salt water. The following directions are for general use and may be adapted to your special needs. Please feel free to call with any questions.

1. Spread *Bio-W™* evenly over the surface of the water, covering the "floating" contaminant.
2. It is not necessary to "cover" all of the surface area because *Bio-W™* will draw the contaminant to itself.
3. *Bio-W™* will float even after it has absorbed all the contaminant.
4. Remove all of the *Bio-W™* from the surface of the water with a net, rake, skimmer or any convenient device (even a wooden board) that will skim the surface of the water.
5. Place the used *Bio-W™* in a plastic bag & close the top with either tape or a "twist-tie".
6. Let the used *Bio-W™* stay in the bag for 10 days or more.
7. *Bio-W™* may be mulched or raked into contaminated soil to help clean up those areas as well.
8. Dispose of according to local, state & federal regulations

APPLICATIONS

While SpillAway+™ *Bio-W™* can be used in all phases of manufacturing, commercial and industrial operations, the following is a partial list of the many uses of this product.

Please contact SpillAway+™ Brands if you have any questions about its usage:

- Holding Lagoons
- Oil-Water Separators
- Ponds
- Trailer Interiors
- Construction Sites
- Retention Basins
- Manhole Areas
- Utility Vaults
- Open Water Areas
- Trenches
- Drainage Ditches
- Oil-Water Interceptors
- Elevator Pits
- Oil Storage Areas
- Chemical Storage Area
- Auto & Truck Wash Areas
- Shopping Malls
- Maintenance Areas
- Airports
- Vehicle Parking Area
- Pumping Stations
- Forestry Mills
- Rail Yards
- Vehicle Maintenance Areas

TECHNICAL INFORMATION

SpillAway+™ Brands *Bio-W™* is an active mixture of hydrocarbon-oxidizing, naturally occurring, single-celled micro-organisms with a natural fiber, hydrophobic absorbent. It is specially formulated to be safe, environmentally enhancing and effective.

PHYSICAL PROPERTIES:

Appearance: Lt. Gray Flakes
 Odor: Odorless
 Boiling Point: N/A
 Soluble in Water: Insoluble
 pH Dry: 7.0
 pH With Water: 6.9 to 7.9
 Evaporation Rate: N/A

PRODUCT EFFECTIVENESS: The effectiveness of this product and the "speed" at which it works is determined by certain factors. In general these factors are as follows:

TEMPERATURE: The warmer the temperature, the faster this product will work.

AGE OF THE STAIN OR SPILL: The older the stain or spill, the longer it takes to work.

TYPE OF HYDROCARBON: Some hydrocarbons take longer than others.

It has been our experience that the absorption action of this product begins immediately. The bio-remedial process will begin almost immediately, after the introduction of water, but may take a longer period of time to complete depending on the above factors.

PACKAGING INFORMATION

1 Cubic Ft. Carton which covers approximately 48 Sq. Ft. of Surface
 SHIPPING: 36 UNITS PER SKID BULK PACKAGING AVAILABLE